

# IDgenetix-Guided Medication Management for Major Depressive Disorder: Confirmation of Randomized Controlled Trial Outcomes by Real-World Evidence

Feng Cao, PhD, Andrea Hanson, PhD, Robert Cook, PhD

Castle Biosciences, Friendswood, TX

## Background

- With the current standard of care medication prescribing strategy, more than 53% of patients with major depressive disorder (MDD) have an inadequate response to first-line treatment and over 72% of patients fail to achieve remission.<sup>1,2</sup>
- Pharmacogenomic (PGx) testing aims to detect variants in the human genome that affect individual response to medications.
- IDgenetix is an advanced 3-in-1 PGx test that incorporates the results of a multi-gene variant panel with drug-drug interactions and lifestyle factors to improve drug efficacy and tolerability in patients treated for MDD, anxiety, or other neuropsychiatric illnesses.
- In a previously published randomized controlled trial (RCT), IDgenetix-guided medication management significantly improved patient outcomes after 12 weeks of treatment.<sup>3,4</sup>

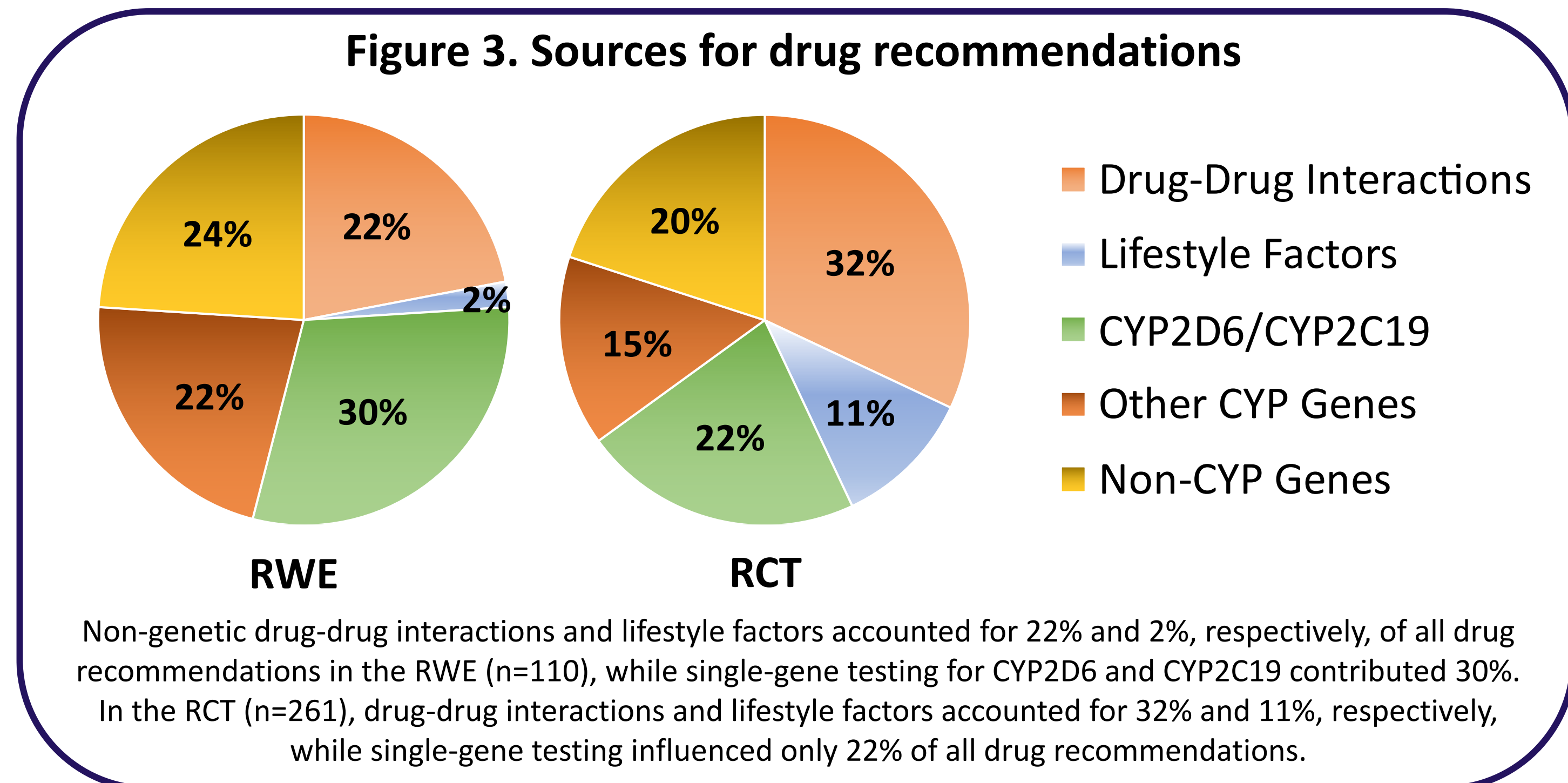
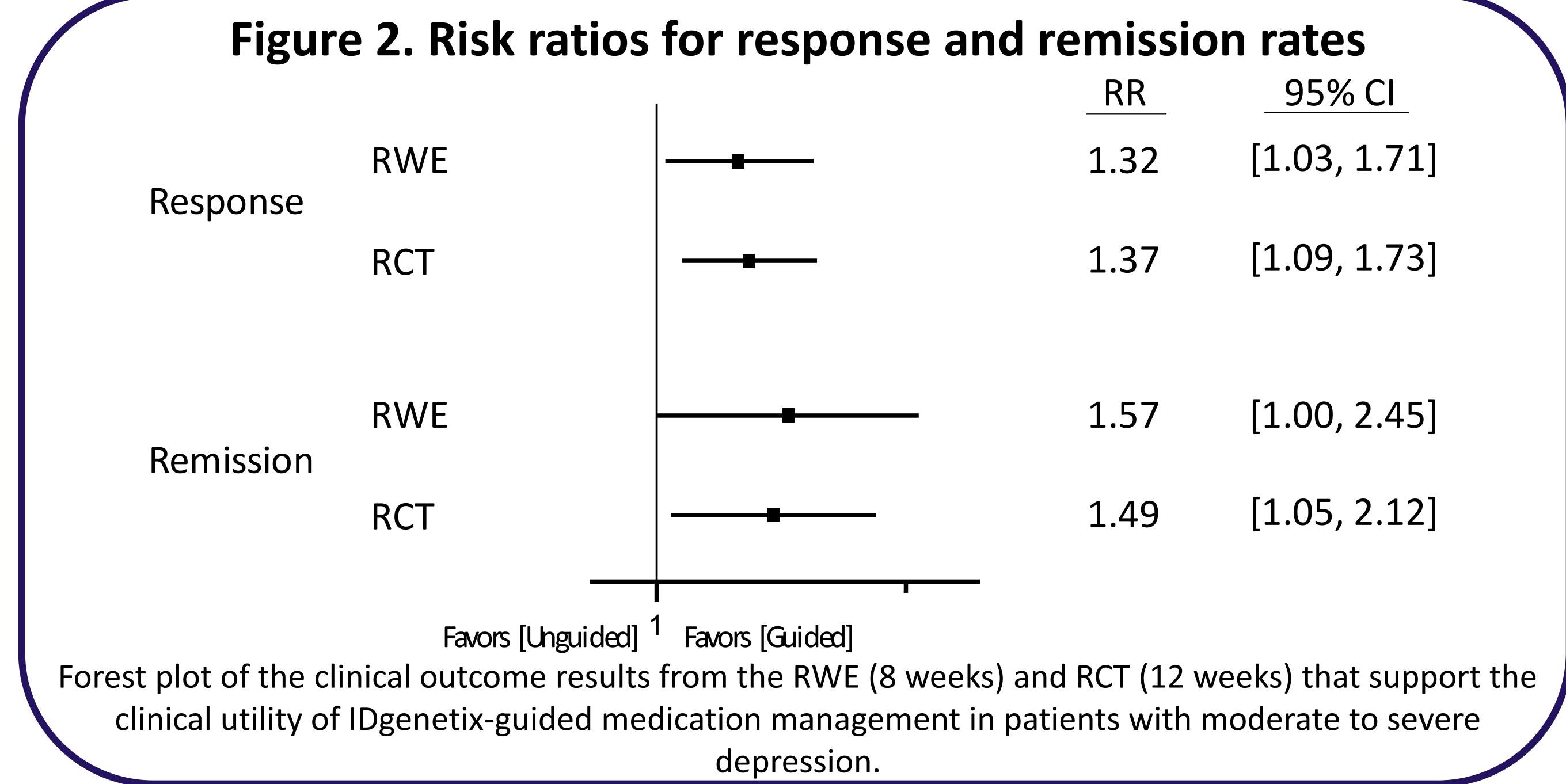
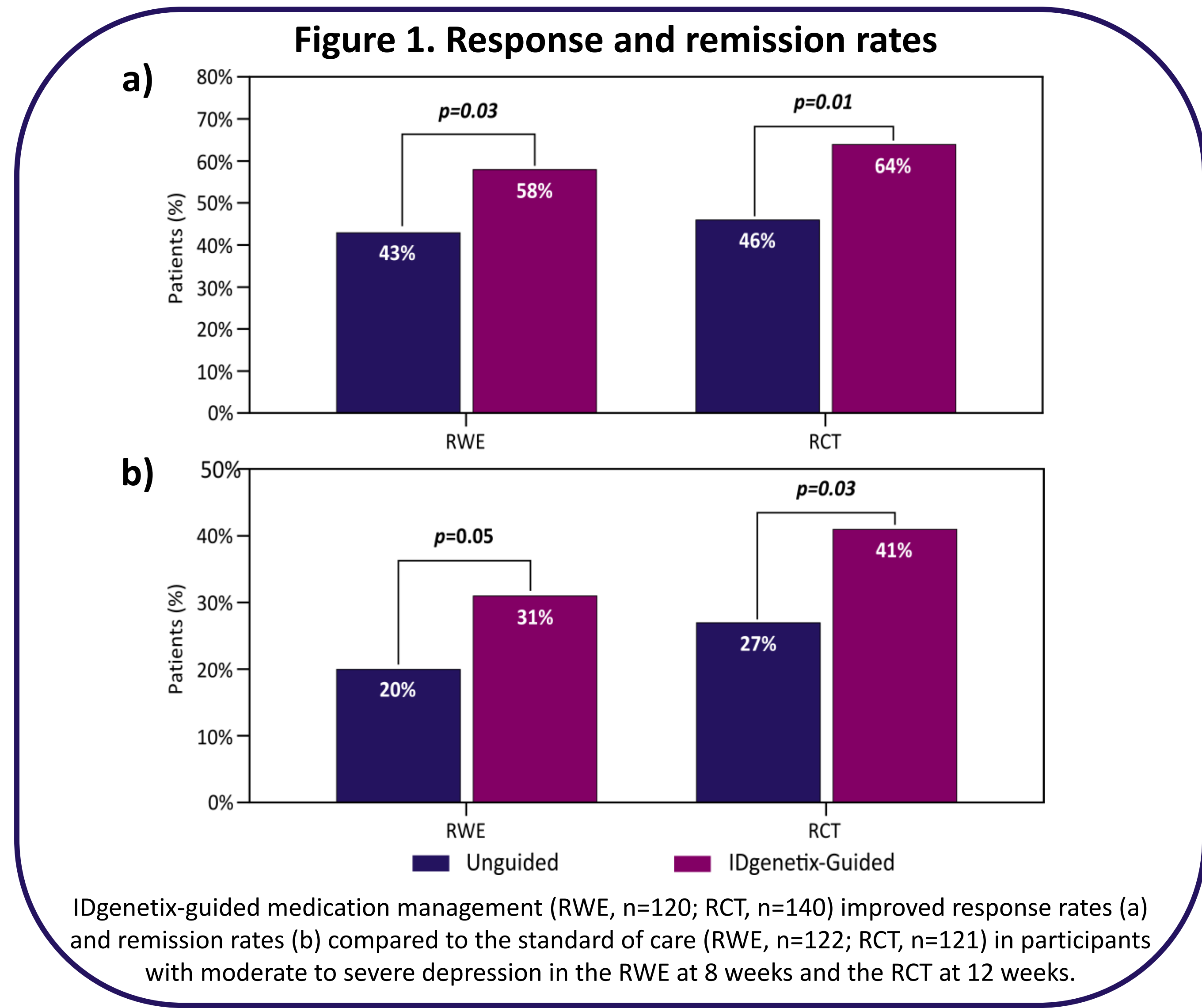
## Objective

- In this study, we compared the clinical outcome results from a previously published, multi-center, RCT<sup>3</sup> with real-world evidence (RWE) from a single-center, non-randomized, open-label study.<sup>5</sup>

## Methods

- Participants with moderate to severe depression at baseline were included in the analysis for the RCT (HAM-D17 ≥20, n=261) and real-world evidence (PHQ-9 ≥10, n=242).
- In both studies, response and remission rates were analyzed using Fisher's exact test for patients provided IDgenetix-guided medication management (IDgenetix-Guided) compared to patients receiving the standard of care (Unguided).

## Results



## Conclusion

- The response and remission rates from the RWE strongly correlate with those from the RCT.
- No single source accounts for the majority of drug recommendations, which is why a multi-gene PGx test that incorporates drug-drug interactions and lifestyle factors is important.
- This study provides robust evidence-based research that supports the clinical utility of IDgenetix to guide medication management in patients with MDD.

## References

- Rush et al. *Am J Psychiatry*. 2006.
- Trivedi et al. *Am J Psychiatry*. 2006.
- Bradley et al. *J Psychiatr Res*. 2018.
- Cao et al. *Psych Congress*. 2023.
- Cao et al. *APA*. 2023.

## Disclosures

FC, AH, and RC are employees and stock/option holders at Castle Biosciences, Inc.